

**NSE**  
**Mouse Monoclonal antibody(Mab)**  
**Catalog # AD80550**

## Specification

---

### NSE - Product info

Application	IHC-P
Primary Accession	<a href="#">P09104</a>
Reactivity	Human
Host	Mouse
Clonality	Monoclonal
Calculated MW	47269

### NSE - Additional info

Gene ID 2026

#### Other Names

Gamma-enolase, 4.2.1.11, 2-phospho-D-glycerate hydro-lyase, Enolase 2, Neural enolase, Neuron-specific enolase, NSE, ENO2

#### Dilution

IHC-P~~Ready-to-use

#### Storage

Maintain refrigerated at 2-8°C

### NSE - Protein Information

**Name** ENO2 ([HGNC:3353](#))

**Function**

Enolase that catalyzes the conversion of 2-phosphoglycerate to phosphoenolpyruvate in glycolysis and the reverse reaction in gluconeogenesis (By similarity). Has neurotrophic and neuroprotective properties on a broad spectrum of central nervous system (CNS) neurons. Binds, in a calcium-dependent manner, to cultured neocortical neurons and promotes cell survival (By similarity). Cytoplasm. Cell membrane. Note=Can translocate to the plasma membrane in either the homodimeric (alpha/alpha) or heterodimeric (alpha/gamma) form The alpha/alpha homodimer is expressed in embryo and in most adult tissues. The alpha/beta heterodimer and the beta/beta homodimer are found in striated muscle,

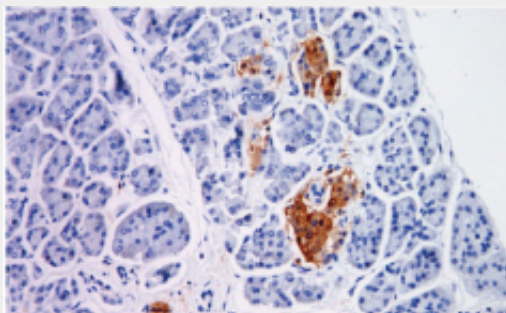
**Cellular Location**

**Tissue Location**

**and the alpha/gamma heterodimer and the  
gamma/gamma homodimer in neurons****NSE - Protocols**

Provided below are standard protocols that you may find useful for product applications.

- [Western Blot](#)
- [Blocking Peptides](#)
- [Dot Blot](#)
- [Immunohistochemistry](#)
- [Immunofluorescence](#)
- [Immunoprecipitation](#)
- [Flow Cytometry](#)
- [Cell Culture](#)

**NSE - Images**

Pancreas